

**MALDON DISTRICT
LOCAL HIGHWAYS PANEL
MEETING – 14 JUNE 2013**

Training Room, Maldon District Council Offices, Princes Road, Maldon – at 9.00am

MINUTES

Present:

Representing Essex County Council – Councillors R L Bass (Chairman), R G Boyce and Mrs P A Channer

Representing Maldon District Council – Councillors A J Cussen, F A Delderfield, Miss M R Lewis, R Pratt (Vice-Chairman) and Mrs M Thompson

Officers: Mrs H Neve (Area Co-ordinator) and J Simmons (Liaison Officer), Essex County Council

1. Apologies for absence

None received

2. Election of Chairman for the ensuing municipal year

Councillor R L Bass was elected as Chairman for the ensuing municipal year.

3. Election of Vice-Chairman for the ensuing municipal year

Councillor R Pratt was elected as Chairman for the ensuing municipal year.

4. Presentation from Tim Olley of the Essex County Council Network Management on the issue of 20mph speed limits

Mr Olley gave Members an overview of the Speed Management Strategy 2010 and the Functional Route Hierarchy adopted 2005 (see Appendix 1 for guidance on 20mph speed limits and Appendix 2 for the Functional Route Hierarchy map).

It was requested that an information pack be issued to local/Ward Members to pass to local residents as appropriate. Mr Olley agreed to look into this.

5. Minutes of Meeting – 22 March 2013

RESOLVED that the Minutes of the meeting of the Panel held on 22 March 2013 be received and approved.

6. Programme of Works 2013-14

Officers distributed the Approved Works Programme Monitor and noted that future copies would contain a more detailed scheme description and also allocated budgets for schemes (see Appendix 3 for the list of Approved Works and scheme status).

The Chairman said that the Panel would need to monitor the progress of works. Officers advised that a monthly update would be distributed to Panel Members.

7. Potential Schemes List

It was advised that items on this list were for the Panel's consideration and recommendation for funding. Any approved would be moved to the Approved Works Programme and be subject to Cabinet Member approval. It was confirmed that the list included the latest requests from Parish and Town Councils.

The Chairman advised that due to the existing programme of work across the County, any schemes recommended by the Panel now were unlikely to be programmed during the 2013/14 financial year and instead would be programmed for 2014/15. The Panel was therefore advised that any further recommendations should be limited to feasibility studies and any urgent schemes to bring to the attention of the Cabinet Member.

Officers advised that some of the schemes listed as Minor Schemes had been approved at the previous meeting of the Panel and have been moved onto the Approved Works Programme (see Appendix 3 for a breakdown of these items).

Potential Schemes:

1. Maypole Road nr j/w Holloway Road, Heybridge (to Captains Wood Road, Great Totham) - edge of carriageway improvements: Agreed to Feasibility Study (£2,500).
2. Tolleshunt D'Arcy Road, Tolleshunt Major – Verge protection: Site visit required.
3. Maldon Road and Witham Road, Langford – 30 mph speed limit through Village: Agreed to delete as does not comply with conditions under Speed Limit Review.
4. Church Road, Tollesbury – Formalise existing parking arrangements behind bus stop: Agreed to add Feasibility Study (£2,500).
5. The Street (Snows Corner to Great Totham Road), Wickham Bishops – Difficulty for pedestrians crossing the road: Currently being validated.
6. Church Road and Kelvedon Road, Wickham Bishops – Additional two Vehicle Activated Signs poles: Currently reviewing locations.
7. Church Road, Wickham Bishops – Extension of 30mph speed limit to junction with Mope Lane: Currently being validated.
8. B1018 Langford Road j/w Wickham Hall Lane, Wickham Bishops – Unsuitable for HGV signs: Now validated. Agreed to recommend allocation of £1,500 for the signs.
9. Imperial Avenue, Mayland – Footway/parking bay improvements: Waiting for boundary information.
10. B1018 High Street, Southminster – Pedestrian Crossing: Agreed to recommend £800 for Degree of Pedestrian Conflict Survey (linked with 11 below as potential scheme).
11. B1012 North Street, Southminster – Agreed to recommend £800 for Degree of Pedestrian Conflict Survey (linked with 10 above).
12. New Hall Lane j/w Mundon Road, Mundon – Signage improvements: Waiting for Validation.
13. Downhall Road, Bradwell On Sea – Request for reduction in speed limit: Agreed to recommend £400 for two Speed Surveys.
14. Main Road j/w Burnham Road, Mundon – Improvement to sight line of Give Way signage: Agreed action - Officers to speak to Maintenance work in relation to vegetation removal.

15. Maldon Road/The Street/Bradwell Road, Steeple – Traffic management improvements: Waiting for Validation.
16. The Drive j/w Steeple Road, Mayland – Junction Improvements: Agreed action - Officers to confirm requirements with Parish Council.

Minor Schemes:

- 1-25. See Appendix 3 for schemes previously approved and moved to current works programme.
26. Downhall Road, Bradwell on Sea – Request for reduction in speed limit: Agreed to recommend £200 for a speed survey.

Bus Stop/Route Improvements:

See Appendix 3 for schemes previously approved.

The Clock Tower, Burnham on Crouch – it was noted that there was a revised valuation. Agreed to recommend that an additional £5,000 be allocated and that the upper limit for the scheme should be £10,000.

Officers advised that the Passenger Transport department had also requested an additional £3,500 for a larger bus shelter than previously approved opposite Railway Hotel at Burnham on Crouch. The Panel agreed with the Chairman that the originally approved budget should be adhered to.

School Crossing Patrol Sites:

See Appendix 3 for schemes previously approved.

Cycling Scheme:

See Appendix 3 for schemes previously approved.

4. Park Drive, Maldon – widening of footway
Members agreed that any spending on this scheme must fall into the budget set for the Cycling Schemes (£75,000) of which £16,000 remained. Agreed action - Officers were requested to relay this to the relevant department to see whether £16,000 could be used to deliver part of this scheme.

Casualty Reduction:

1. B1022 Colchester Road j/w Mountains Road, Great Totham – signing and road marking improvements at the junction. It was noted that the cost was likely to be £4,000, not £1,950.
2. B1018 Burnham Road j/w Green Lane – Althorne – signing and road marking improvements at the junction. It was noted that this cost was likely to be £5,000 not £2,450.

Members agreed that these schemes should remain on the Potential Scheme List to be considered for programming at a future meeting.

Officers introduced the following scheme for consideration:

1. Footpath at Maldon Road, Great Totham (from opposite The Bull Public House to Beckingham Road).

Officers distributed the revised design for the walkable verge (£25,000) and the work required to the existing culverts (£51,000).

There was some discussion regarding the condition of the existing walkway. Members suggested that the scheme be separated into two phases: Phase 1 to reconstruct the footway to near Beckingham Road, and Phase 2 to provide a solution to the obstruction at culvert 2. Officers advised that a road safety assessment would need to be carried out prior to starting Phase 1.

It was agreed to recommend £25,000 for Phase 1 to be added to the Approved Works Programme.

8. Section 106 Funding

The Panel received and noted summary of the present position regarding monies arising from Section 106 agreements.

9. Highway Rangers Work Summary

The Panel received and noted a summary of the work March to May 2013 and the Chairman referred to work he had requested at Blue Mills Bridge, Wickham Bishops. Members noted that the majority of the items listed were awaiting update on the completion. Officers advised that an updated copy would be circulated to Members before the next meeting.

10. Casualty Reduction Schemes 2013/14

This item had been covered under Agenda Item 7.

11. Items Requested by Panel Members

- (i) Possible extension of 30mph limit on Lower Burnham Road west to the parish boundary and east to Mansion House, Althorne (Councillor A J Cussen). The Chairman advised that a comprehensive review of speed limits in the County had been previously carried out and that no further changes to the network could be made.

Hatching at junction of Summerhill and Lower Burnham Road, Althorne (Councillor A J Cussen). This was included in the Potential Schemes List.

Officers then advised of a validated scheme involving a one-way system on Wantz Road between the High Street and Queen Street to facilitate a resident's parking scheme (cost £1,000). A report on this would be brought back to the next meeting.

The Chairman requested that Any Other Urgent Business be added to the next agenda.

12. Arrangements for future meetings

The following schedule of meetings were agreed:

Friday 18 October 2013

Friday 17 January 2014

Friday 7 March 2014.

Meeting will commence at 9.00am in the Maldon District Council Chamber.

The meeting closed at 10.50 am.

Highways and Transportation**May 2013****To All Members****20 MPH SPEED LIMITS**

The Essex County Council Speed Management Strategy was adopted in 2010 after extensive consultation. In January 2013, the Department for Transport (DfT) released new guidance on speed limits to local authorities and a review was then conducted to see if the strategy was still fit for purpose.

Overall, the review found that the Essex County Council Speed Limit strategy remained appropriate and was in line with the new DfT guidance.

As far as 20 mph speed limits are concerned, it is our objective that any 20mph restriction should be self-enforcing.

A comprehensive speed limit review has been concluded which reviewed all limits on the PR1 & PR2 (county road) network; 20 mph limits are unlikely to be appropriate on these roads.

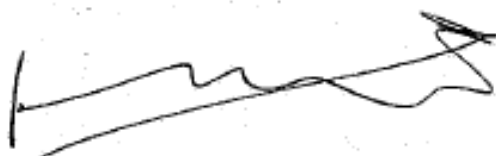
The current policy allows for consideration of 20 mph speed limits on local roads. If mean speeds are below 29 mph, residents can apply for the introduction of a 20 mph limit. It should be noted that police activity to enforce such a limit will be unlikely unless there is a significant excessive speeding issue. It should also be noted that physical traffic calming measures will not be installed as part of a 20mph limit.

20 mph zones cover a number of roads and require traffic calming; these can also be considered on the local road network. 20mph schemes could also be considered in the high street shopping areas of some historic towns.

Advisory 20 mph limits and "20's plenty" can be supported outside schools on local roads.

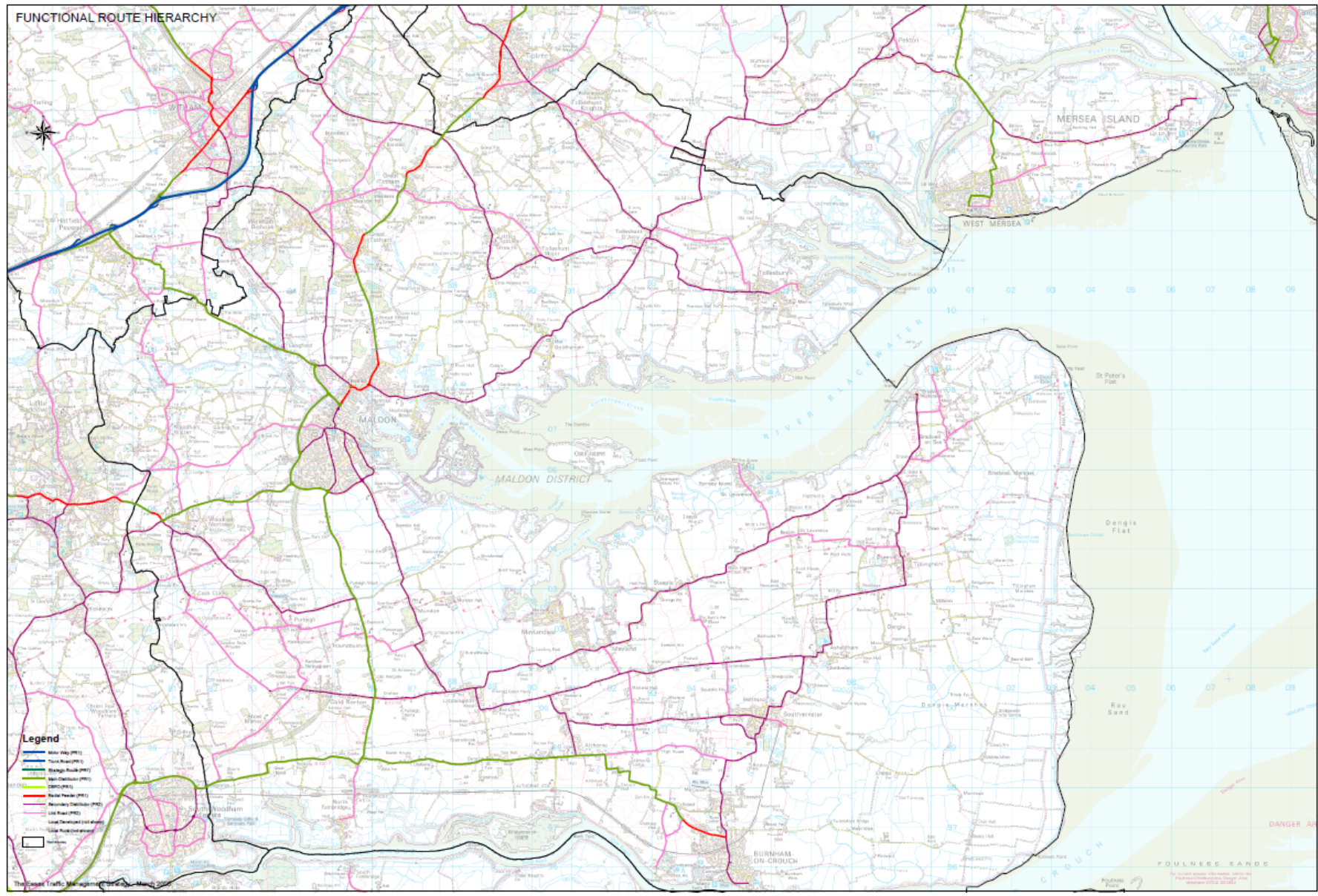
All requests for 20 mph speed limits must be put to the Local Highways Panel for consideration. To be successful they must evidence strong local support from residents and the local community, and also be financed from the LHP budget allocation.

The County Council's Speed Management Strategy is available on the ECC website ([Policy and Strategy | Essex County Council](#)).



Cllr Rodney L Bass
Cabinet Member for Highways and Transportation

Date: 28/05/2013



Approved Works Programme 2013/14
APPENDIX 3

Ref	Location	Scheme Type	Notes	Status
DC297	Coleman's Bridge, Little Braxted	Minor	Junction improvements scheme to deter Goods Vehicles from using route as a short cut	Design only
DC1205	A414/B1418/B1010 Oak Corner Roundabout	Casualty Reduction	Sign rationalisation	Completed
DC1206	B1010 Burnham Road, Woodham Mortimer	Casualty Reduction	Signage/road markings, surface improvements	Completed
DC1207	A414 Maldon Bypass Phase 1	Casualty Reduction	Pedestrian refuge island and associated scheme works	Construction due to finish 14/06/13
DC1207	A414 Maldon Bypass Phase 2	Casualty Reduction	Pedestrian refuge island and associated scheme works	Construction due to finish 24/09/13
DC1264	Maldon Road, Langford	Minor	Close off un-official layby with reflective marker posts	Construction due to finish 31/07/13
DC1265	Tom Tit Lane, Woodham Mortimer	Small	SLOW carriageway road markings and associated signage	Completed
DC1266	The Drive, Mayland	Small	New Vehicle Activated Sign Post	Completed
DC1320	Spital Road, Maldon	School Crossing Patrol Site	Parking restrictions to allow improved visibility for patrol	Construction due to finish 26/06/13
DC1323	Tolleshunt D'Arcy Road/ Beckingham Street, Tolleshunt Major	Minor	New footway	Construction due to finish 29/11/13
DC1324	Braxted Road/Kelvedon Road, Little Braxted	Minor	Kerbing to triangle area	Completed
DC1325	B1022 Maldon Road, Great Totham	Minor	New footway between Village Hall and Beckingham Road	Waiting costs
DC1326	School Road, Wickham Bishops	Minor	Kerb green outside library	Construction due to finish 14/08/13
DC1327	London Road, Maldon	Minor	Pedestrian guard rail outside school entrance	Completed
DC1465	High Street/Ship Road, Burnham on Crouch	Minor	Lighting of one-way signs	Officers to check implantation stage
DC1466	Coleman's Bridge, Little Braxted	Minor	Junction improvements scheme to deter Goods Vehicles from using route as a short cut	Construction due to finish 13/09/13
DC1467	Mill Road, Maldon	Minor	Relocation of No Entry point	Construction due to finish 15/01/14

Approved Works Programme 2013/14
APPENDIX 3

Ref	Location	Scheme Type	Notes	Status
DC1468	Burnham Road/Green Lane/ Highlands Hill/ Foxhall Green Lane, Althorne	Minor	Signing review	Construction due to finish 1/11/13
DC1596	B1018 Burnham Road j/w Green Lane, Althorne	Casualty Reduction	Advance design works on potential scheme	Design to be brought back to panel
DC1597	B1022 Colchester Road j/w Mountains Road, Great Totham	Casualty Reduction	Advance design works on potential scheme	Design to be brought back to panel
DC1663	Basin Road, Heybridge	Minor	Vehicle Activated Sign Installation	Officers to meet with Parish Council
DC1664	D'Arcy Road, Tolleshunt Knights	Minor	New footway	Officers to check implantation date
DC1665	Maypole Road, Wickham Bishops	Minor	Village gateways & SID posts	Due 24/09/13
DC1666	Wycke Hill, Maldon	Minor	Pedestrian island feasibility study	Design due 20/12/13
DC1004	Fullbridge Road, Maldon	Section 106	Tactile paving at pedestrian crossing points	Completed
DC1699	Viking Road/Dorset Road/ Wordsworth Road, Maldon	Minor	Prevention of vehicles parking on verges feasibility study	Design due 31/03/14
DC1700	Basin Road j/w Goldhanger Road, Heybridge	Minor	Provision of dropped kerbs	Construction due to finish 27/01/14
DC1701	East Street, Tollesbury	Minor	Sign and lining works improvements outside school	Officers to check if work can be completed during school holiday
DC1702	Maypole Road, Wickham Bishops	Minor	Extension of 30mph speed limits	Construction due to finish 12/02/14
DC1703	Braxted Park Road j/w Maldon Road, Braxted/Tolleshunt Major	Minor	Verge works to prevent parked vehicles obstructing sight line	Construction due to finish 25/02/14
PROW 24	Heybridge	PROW	Upgrade surface and reinstatement of width	Officers to confirm date
PROW 29/24	Cold Norton, Stow Maries	PROW	Bridleway stepped ramp at St Stephens Road	Officers to confirm date

Approved Works Programme 2013/14**APPENDIX 3**

Ref	Location	Scheme Type	Notes	Status
	The Railway Hotel, Station Road, Burnham on Crouch	Bus Stop Improvements	New wooden shelter	Construction due to finish 01/08/14
	Oak Corner, Maldon Road, Woodham Mortimer	Bus Stop Improvements	New wooden shelter	Construction due to finish 02/09/2013

DRAFT

Ref	Location	Scheme Type	Notes	Status
	Maypole Road nr j/w Holloway Road, Heybridge		Edge of carriageway improvements	Feasibility Study to be carried out
	Church Road, Tollesbury		Formalise existing parking arrangements behind bus stop	Feasibility Study to be carried out
	Maldon Road, Goldhanger	Minor	Traffic calming	Officers to confirm status
	Maldon Road, Goldhanger	Minor	Bend improvements	Officers to confirm status
	Witham Road/Tolleshunt D'Arcy Road/Mill Lane/ Tudwick Road, Tolleshunt Major	Minor	Junction improvement	Officers to confirm status
	Braxted Park Road j/w Maldon Road, Great Braxted/Tolleshunt Major	Minor	verge protection	Officers to confirm status
	Walden House Road near j/w B1012, Great Totham	Minor	formalising reduced width lay by	Officers to confirm status
	Captains Wood Road j/w Maypole Road, Great Totham	Minor	Road junction improvement	Officers to confirm status
	Royal Oak Public House, Fambridge Road, Maldon/Hazeleigh	Minor	Feasibility Study into extending footpath	Officers to confirm status
	Church Hill, Purleigh	Minor	Feasibility Study into extending footpath	Officers to confirm status
	Walden House Road, Great Totham	Minor	parking improvements	Officers to confirm status
	Summerhill/Burnham Road j/w Fambridge Road, Althorne	Minor	junction improvement	Officers to confirm status
	Summerhill, Althorne	Minor	Speed Indicator Device socket	Officers to confirm status
	South Street and Bradwell Road, Tillingham Road	Minor	Markings regarding 30mph boundary	Officers to confirm status

Ref	Location	Scheme Type	Notes	Status
	Oaks Corner Roundabout, Woodham Mortimer	Minor	Dedicated left turn lane	Officers to confirm status
	Morrisons Roundabout, Wycke Hill, Maldon	Minor	Dedicated left turn lane	Officers to confirm status
	B1021 Eves Corner, Burnham-on-Crouch	Minor	improvements to vehicle and pedestrian safety	Officers to confirm status
	Princes Road, Burnham-on-Crouch	Minor	footway and parking improvement	Officers to confirm status
	Crouch Road j/w Station Road, Burnham-on-Crouch	Minor	dropped kerb	Officers to confirm status
	The Street and end of Rectory Lane/Lower Burnham Road, Latchingdon,	Minor	congestion relief vehicle count	Officers to confirm status
	B1021 Southminster Rod, Asheldham (Green Lane to Southminster Road)	Minor	Bend improvements	Officers to confirm status
	Opposite The Clock Tower, High Street near j/w Ship Road, Burnham on Crouch (Stop ID IM2082Y)	Bus Stop/Route Improvement	Formalise bus stop	Officers advised that the new design may cost up to an additional £5,000
	Maldon Primary School, Wantz Road, Maldon	School Crossing Patrol Sites	Site safety assessment	Officers to confirm status
	Maldon Town Centre	Cycling Schemes	Cycling parking in various locations	Officers to confirm status
	Mill Lane j/w Anchorage Hill, Maldon	Cycling Schemes	Cycling infrastructure improvements	Officers to confirm status
	Maldon Town Centre	Cycling Schemes	Additional cycling signage – various locations	Officers to confirm status
	Footpath connecting North and South Totham	Casualty Reduction	Phase 1 agreed	Officers to confirm